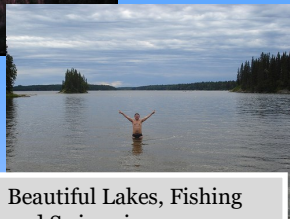


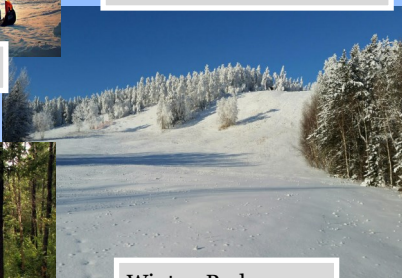
Long Summer Nights



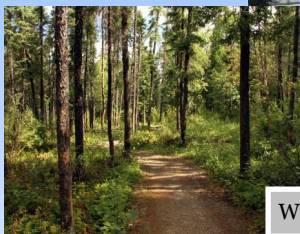
Great Snowmobiling



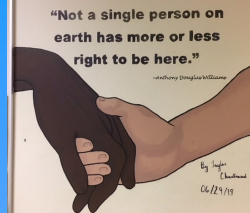
Beautiful Lakes, Fishing and Swimming



Winter Park



Walking Trails



Success for all

## School District of Mystery Lake

408 Thompson Drive North  
Thompson, Manitoba R8N 0C5

Phone: (204) 677-6150

Fax: (204) 677-9528

<http://www.mysterynet.mb.ca>



# School District of Mystery Lake

Success for all

## Mission

*The School District of Mystery Lake will ignite each learner's potential in a safe and inclusive environment that nurtures, celebrates and inspires life-long learning through a diversity of educational experiences.*

## Vision

*Every student matters, every moment counts. For the learners of today to be the leaders of tomorrow.*

## Ethical Values

*Respect, Courage, Humility, Wisdom, Honesty, Truth and Love.*



Thompson, Manitoba

Hub of the North

## Why is School District of Mystery Lake a great place to work?

- Dynamic people
- Team-oriented environment
- Exciting and growing location
- Excellent salaries and benefits
- Cost of Living comparable to Winnipeg
- Opportunity for advancement
- Commitment to teachers and excellence in teaching



# School District of Mystery Lake



## About our School District

The School District of Mystery Lake is located in the City of Thompson which is set in the ruggedly beautiful Canadian Shield. Thompson offers both the amenities of a modern urban centre and some of the best hunting, fishing and snowmobiling available in the province. The School District of Mystery Lake consists of six elementary schools and one comprehensive high school, with a total enrollment of approximately 2960 students.

## Our Team

We recognize our teachers as leaders in education and work to empower our teachers through professional development and a strong support staff network including; A Student Services Administrator, Cree Language Coordinators, Psychologist, and Curriculum Support Team.

## Empowering Staff

Our commitment to excellence in teaching and learning requires an investment in our teachers. Therefore, the School District of Mystery Lake offers :

- A Leadership Intern Program for aspiring administrators.
- Literacy and a Numeracy support teacher which assist teachers to incorporate best practice strategies into their classroom.
- Cultural Proficient Education Consultant who assists teachers in incorporating Cultural Perspectives into their lessons, units and classrooms.
- Opportunities to build professional skills and relationships with colleagues through ongoing Professional Development opportunities.
- French Language Support which provides in classroom support to enhance French Immersion and French as a Second Language programs.
- A Cree Language Consultant who provides in classroom support to enhance Cree bilingual and Cree as a Second language programs.

## Investing in Well-Being

Part of making an investment in our teachers involves making an investment in their well being. The School District of Mystery Lake offers a comprehensive benefits plan including:

- Drug, Ambulance and Semi-Private Hospital coverage
- Premium Dental insurance
- Premium Vision insurance
- Life Insurance
- Short and Long term Disability
- Duty Free Lunch hours
- 3 Paid Personal Leave Days
- University/Special Course Loans
- Sabbatical Leave
- Early Leave Incentive Plan.
- Deferred Salary Leave Plan ( Evergreen Plan)
- A Moving Allowance of up to \$ 4000.00 dollars
- Annual Travel Allowance