



Certification in 5G Installation

CONTACT

+1-647-494-4882
admissions@cuti.ca
info@cuti.ca

WEBSITE

www.cuti.ca

Content

What is 5G	4
What You'll Learn	5
Course Timeline	6
Admissions	8
Learning Outcomes	9
Career Outcomes	10
Tuition & Fees	11



Take the first step to
a rewarding career in
infrastructure



Develop a deep understanding of 5G Networks to prepare for a career as a telecom rigger / tower install technician, field supervisor, and more.

What is 5G Installation?

5G is the 5th generation mobile network. It is a new global wireless standard after 1G, 2G, 3G, and 4G networks. 5G enables a new kind of network that is designed to connect virtually everyone and everything together including machines, objects, and devices.

5G wireless technology is meant to deliver higher multi-Gbps peak data speeds, ultra low latency, more reliability, massive network capacity, increased availability, and a more uniform user experience to more users. Higher performance and improved efficiency empower new user experiences and connects new industries.

What You'll Learn

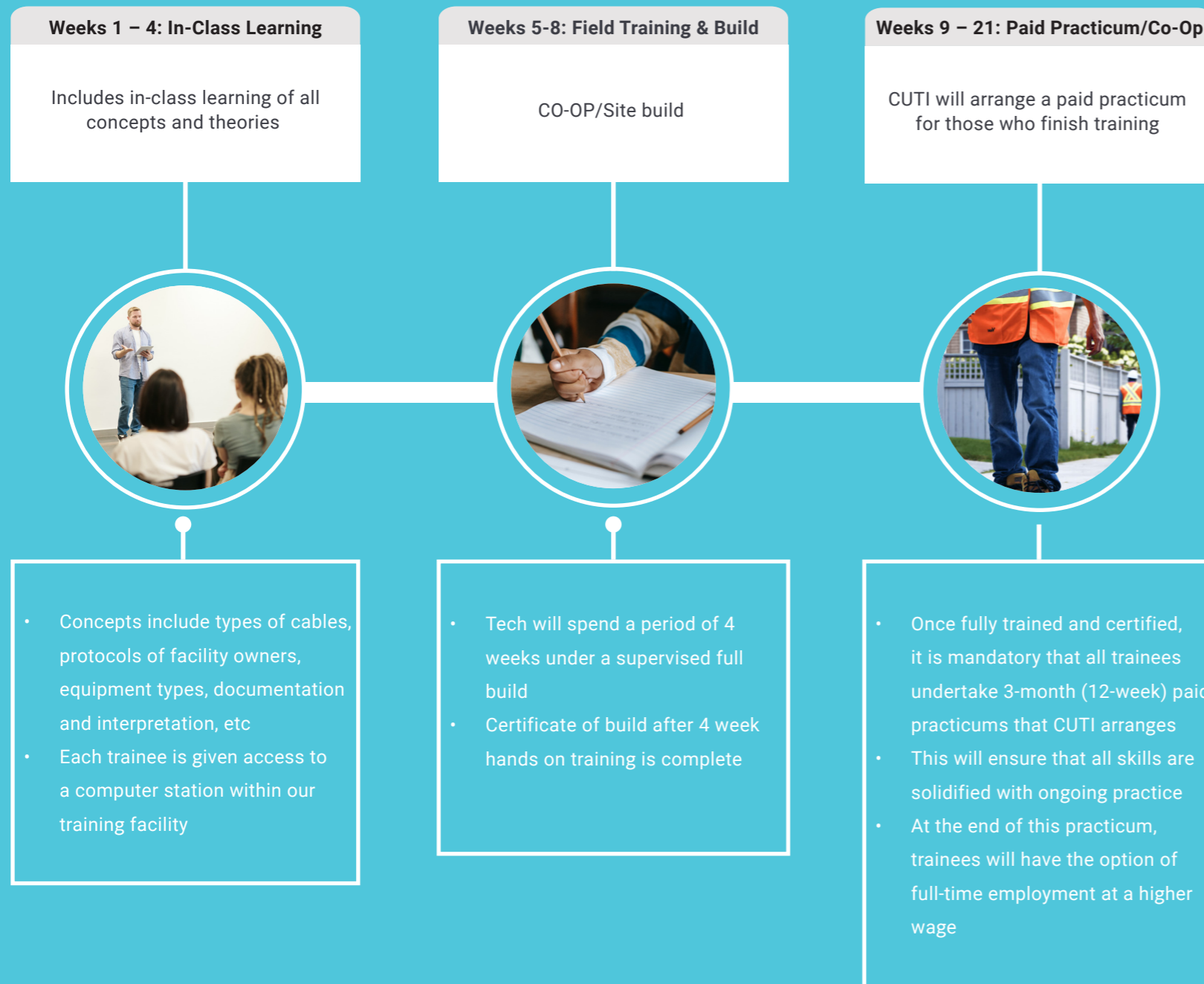
This course will provide you with a deep understanding of how wireless networks are installed. You will be introduced to equipment such as antenna, remote radio units and base band units and will learn crimping, connectorization and waterproofing of units. Visit the course curriculum section to learn more.

Course Curriculum

This 8-week program covers the following topics:

- Working at heights training
- Tower rigging/winch operation and hoisting
- Certification in test equipment
- Occupational Health and safety
- Government safety regulations, Codes and PPE use
- Certified safety auditing training program
- Work procedures and safe work practices
- Rigger safety training
- WHMIS course
- First Aid rescue course (Including tower)
- Training on installation of wireless networks
- Reading Plans and RF specs
- Vendor label identification and installation practices
- Introduction to equipment such as antenna, remote radio units and base band units
- Introduction to wireless cables and certification in connectorizing RF cables
- Introduction of grounding and certification in ground crimping
- Introduction to water proofing
- Electrical awareness and safe handling
- Introduction to DC cables and certification in connectorizing DC cables
- Introduction to fiber cables and safe handling and fiber cleaning training
- Introduction to test equipment (sweep gear, Alignment tool, RET Alignment)
- Specialized tool instruction (JMA tool, Mag Drill and prep tools)
- CO-OP/Site build
- Tech will spend a period of 4 weeks under a supervised full build with existing crew
- Certificate of build after 4 week hands on training is complete

CUTI Course Timeline



Apply Today!

Admissions

Admission to this program is based on several factors. You must complete our online application form, which can be found [here](#). Applications are accepted on a rolling basis, with multiple course start dates throughout the year. Limited spots are available in each training cohort, and applications must be received at least 7 days in advance of the course start date you wish to apply for.

Requirements

Admission requirements & pre-requisites for this program include:

- Ontario Secondary School Diploma (OSSD) or equivalent, including: Grade 12 English, or equivalent
- Basic to intermediate computer skills
- Valid driver's license with clean driver's abstract
- Ability to work in Canada
- Hear and distinguish emergency signals and instructions while on duty
- Must be able to repetitively sit, lift, stoop, bend, squat, kneel, reach and crawl
- Must be able to repeatedly lift a minimum of 50 pounds
- Must have physical strength and stamina to work outdoors and standing for extended periods.
- Able to work in a full body harness on rooftops and / or towers
- Must be able to climb ladders, and work from stationary platforms from elevated heights

Applicants should note that:

- Most employment opportunities require that certain physical standards, driving abstracts and health standards, including vision, must be met
- A Police Criminal Record Check (PCRC) (pardons are possible, seek legal counsel) and additional selection criteria may be used to assess applicants in this program
- Applicants should be advised that most employers require a criminal records check (PCRC)
- Applicants are advised that there are specific requirements that must be completed prior to participating in a co-op placement and that it is their responsibility to ensure the requirements are met
- Students are required to successfully complete several tests designed for damage prevention careers and a written assessment to achieve certification

Learning Outcomes

Once certification is achieved, trainees will be able to:

- Utilize site plans, area maps, blueprints, and other information in order to install wireless networks.
- Communicate relevant information to excavation/construction personnel or other appropriate authorities.
- Operate installation equipment, including winch operation and hoisting.
- Understand how wireless cables work, and how to achieve proper connectorization of cables.
- Understand and adhere to all safety procedures, including electrical awareness, safe handling of cables, and testing.
- Complete tasks & duties in a timely manner and upload to management programs.
- Maintain start and end logs of work perform.
- Operate company vehicle in a safe manner, and maintain professional appearance.
- Transport equipment/supplies to assigned job sites; clean and maintain equipment.
- Adhere to all health and safety procedures, including completing daily forms and reports.

In addition, some benefits of completion include:

- Gaining a thorough understanding of utility construction and operation.
- Gaining confidence in dealing with customers and clients.
- Learning to work independently and within a team setting.
- Going to different work sites and adapting to changes.
- Growing knowledge of different companies while working on-site at different projects
- Keeping physically active and getting to work outdoors
- Gaining knowledge of different areas in local cities/regions
- Being able to travel to other provinces/areas

Career Opportunities

Your future career options

- Telecom Rigger / Tower Technician
- Field Supervisor
- Site Manager
- 5G Installation Trainer
- Foreman

Where you could work

- Utilities Companies: INTUS Construction, Tierra Geomatic, HTS

Testimonials

Andre Bromfield

Field Operations Manager

"It is a job that requires you to be on point at all times, but you have amazing support - we were able to get out there and achieve on the highest level - the systems and programs used for the job enabled us to fit in and do well. I was quickly able to earn to support and settle my family - that was motivation enough."



Matt Cooper

Field Operations Manager

"This industry is a world wide translational career opportunity - you can learn locating through CUTI and translate that knowledge into any utility locating/related position worldwide. The methodology and processes, and knowledge you garner here, can be applied anywhere in the world where utilities are buried."



Tuition

Admission requirements & pre-requisites for this program include:

Application Fee \$25.00 CAD

Course Fee \$0.00 CAD (Successful applicants must commit to paid practicum and work experience component)

Paid Practicum Fee \$0.00 CAD

Above fees based on 2022 program start dates. Contact us to confirm fees for other start dates.

Course Start Dates

Upcoming course dates:

Please visit www.cuti.ca for the most current registration dates. Alternatively, you can scan the QR code below with your smart phone to be re-directed to our program page.





Get In Touch Today!

Contact Our Information Hub

Haven't applied yet and have questions?

Contact our Information Hub for details on programs, how to apply, and more.

info@cuti.ca

Phone: +1-647-494-4882 ext. 803

Contact Admissions

Contact our Admissions advisors for help with your application.

admissions@cuti.ca

Phone: +1-647-494-4882 ext. 802